



# High-Touch Surfaces: Cleaning *C. difficile* isolation rooms

To help prevent the spread of infection, these high-touch surfaces should be cleaned with bleach/sporicidal. Observe Dwell Times/Wet Times per product-specific directions.

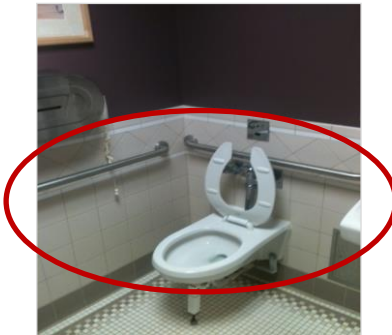
**Tray table**



**Bed rails**



**Toilet seat & hand rails**



**Phone**



**Call button**



**Door handles**



**Switches**



**Drawer handles**



**Chair arms**



Adapted from materials developed by Brett Sitzlar, Clinical Research Coordinator, Case Western Reserve University. Used with permission.

All material presented or referenced herein is intended for general purposes and is not intended to provide or replace the independent judgment of a qualified healthcare provider treating a particular patient. KEPRO disclaims any representation or warranty with respect to treatments or course of treatment based upon information provided. Publication No. 311201-OH-2285-01/2014. This material was prepared by KEPRO, the Medicare Quality Improvement Organization for Ohio, under contract with the Centers for Medicare & Medicaid Services (CMS), an agency of the U.S. Department of Health and Human Services. The contents presented do not necessarily reflect CMS policy.